

Insects and Mites in Stored Grain and Grain Stores

These are the more common of over 50 species that may occur in grain stores. Correct identification is important. For advice and an identification service please contact The Food and Environment Research Agency using the details given below. Photographs: © Crown Copyright.



SAW-TOOTHED GRAIN BEETLE
Oryzaephilus surinamensis



RUST-RED GRAIN BEETLE
Cryptolestes ferrugineus



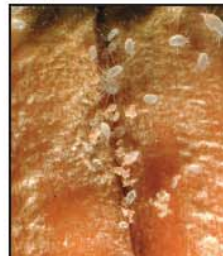
GRAIN WEEVIL
Sitophilus granarius



FOREIGN GRAIN BEETLE
Ahasverus advena



FLOUR MITE
Acarus siro



COSMOPOLITAN FOOD MITE
Lepidoglyphus destructor



LESSER GRAIN BORER
Rhyzopertha dominica



BROWN HOUSE MOTH
Hofmannophila pseudospretella



WHITE-SHOULDERED HOUSE MOTH
Endrosis sarcitrella



HAIRY FUNGUS BEETLE
Typhaea stercorea



WHITE-MARKED SPIDER BEETLE
Ptinus fur



MOULD BEETLE
Cryptophagus species



PLASTER BEETLE
Lathrididae



BOOKLICE (2 species shown)
Psocoptera



ROVE BEETLE
Staphylinidae



GROUND BEETLE
Carabidae



NARROW-NECKED HARVEST BEETLE
Anthicus floralis



CLOVER WEEVIL
Sitona species



PREDATORY MITE
Gamasina



PREDATORY MITE
Cheyletus eruditus

- Primary pest; grain-damaging species
- ▲ Secondary pest; mould or hygiene-related species
- Non-damaging or stray species



Fera science working in partnership with industry