

ADAS Harvest Report 2010

Contact Sarah.Wynn@adas.co.uk or Susan.Twining@adas.co.uk

(Note: Harvest reports run up to close of play on Tuesday of each week)

Harvest reports produced by ADAS on behalf of HGCA



Summary

Less than 10% of the combinable crop area was left to harvest but unsettled conditions with regular rain showers disrupted progress only 1-3 very short combining days available and only about one third of the potential area was harvested. There was good progress in England where conditions were drier with most crops now harvested other than small areas of linseed and field beans. However there was less progress in Scotland where most of the remaining crops are located.

Headlines

Wheat – About 95% UK area harvested. Yields more variable than normal, and generally lower than average, although recent yields from northern regions have been around average or slightly better. The average UK yield is estimated to be about 7.5-7.7t/ha, about 3-5% below the UK 5 year average (7.9t/ha). Crop quality generally good, although protein levels are more variable than normal. Crops harvested in southern regions in last two weeks have generally lower hagerbergs and specific weights but this is only a small proportion of the total.

Winter barley – Harvest complete. Estimated average UK yields below average at 6.2-6.3t/ha.

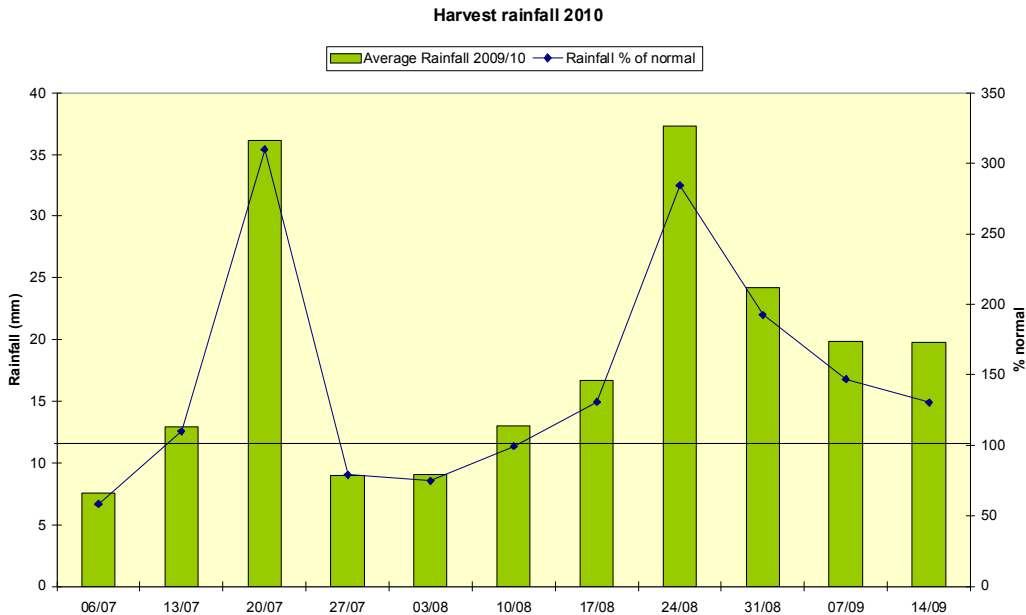
Spring barley – Around 90% of UK area harvested with almost 100% of the area in England and Wales cleared and nearly 80% in Scotland. Average UK yields are estimated to be about 5.0-5.2t/ha, about 6% below the UK 5 year average (5.4t/ha). Quality remains good with high specific weights and good grain nitrogen levels, although there is some variability.

Oats – Almost 100% of the UK area harvested. Average UK yield is estimated to be approximately 5.5-5.6t/ha, down on the UK 5 year average (5.8t/ha).

Winter oilseed rape – Harvest complete. Average UK yields estimated to be about 3.7t/ha an increase on the 5 year average (3.3t/ha).

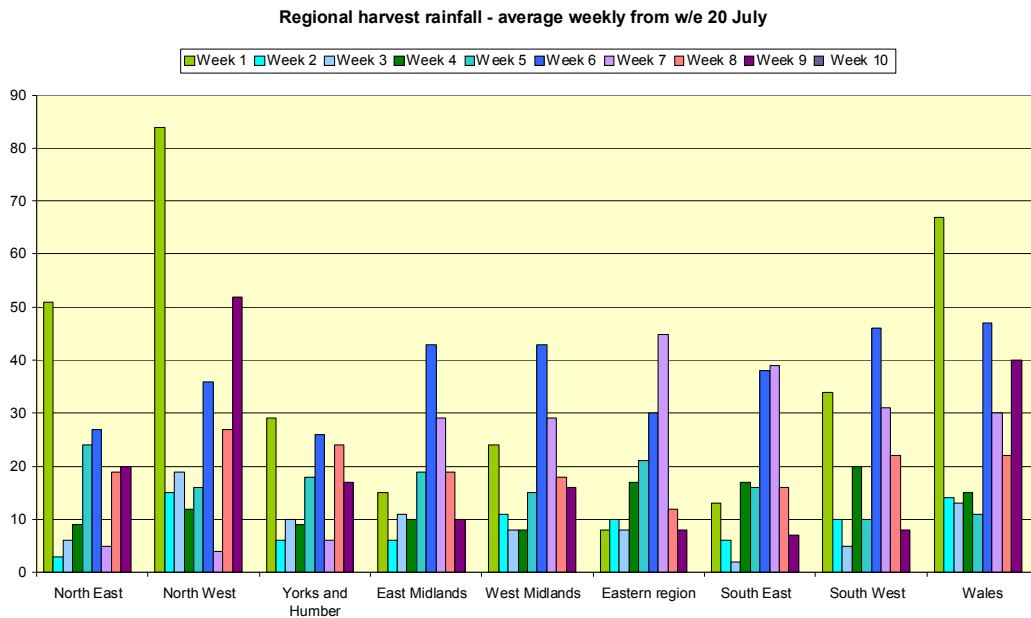
Weather

Average rainfall in the past week up to Tuesday was 20mm, almost 175% of normal (Figure 1), with regional rainfall over 50mm in North West (Figure 2), and below 10mm in the south and east. Rainfall in Scotland was also high. The regularity of showers and high humidity prevented crops drying, limiting harvest progress.



Source: ADAS 2010 from Met-office data

Figure 1 UK weekly harvest rainfall 2010



Source: ADAS 2010 from Met-office data

Figure 2 Regional weekly average rainfall during harvest

Combining

Regular showers, particularly in Scotland and the northern regions of England, caused disruptions to harvest reducing the available combining time down to just 1-3 short days of 4-6 hours combining. Around 100,000 ha of crops were harvested (Figure 3), about one third of the remaining area.

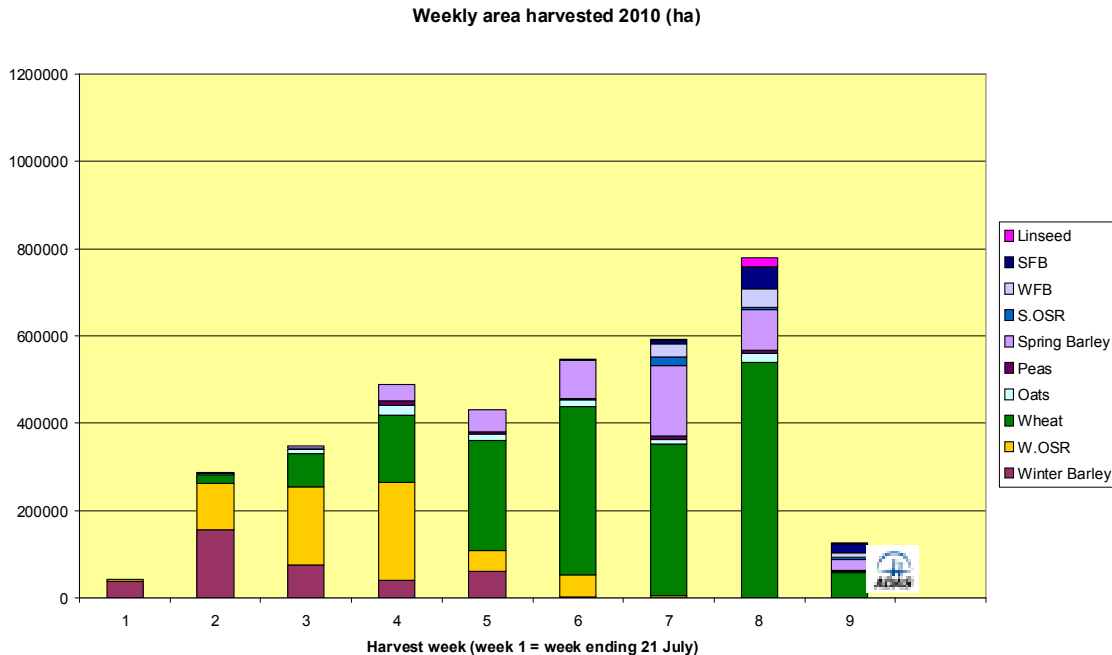


Figure 3 Weekly area harvested

Farm grain drying and storage

Regular showers, cold nights and heavy dews meant that harvested grain moistures were averaging 16-17%. As a result about 80-90% of grain harvested required some drying, with moistures in wheat ranging from 15% up to 25%. Where spring barley samples were being sold straight for malting there is a reduced requirement for drying with some maltsters prepared to take grain at higher moistures.

Quality

Wheat – Specific weight weekly average 72 kg/hl, Hagberg falling number (HFN) 225-300 seconds, grain protein 12-13%. In the south and east, especially soft wheats, there has been a drop in HFNs and specific weights in grain harvested in the last week. Crops harvested in the northern regions have continued to hold their quality with HFNs close to 300 seconds and specific weights in the high seventies. DON levels in tested grain remain low.

Winter barley – Specific weight 64-66 kg/hl, grain nitrogen 1.5-1.7%, screenings 1-3%.

Spring barley – Specific weight 64-66kg/hl, grain nitrogen 1.6-1.8%, screenings 1-4%. The specific weights in some later harvested spring barley crops in southern part of England started to drop, although they remain good in northern regions and Scotland.

Oats – Specific weights 49-51 kg/hl.

Oilseed rape – Oil content 43-46%.

Harvest Progress

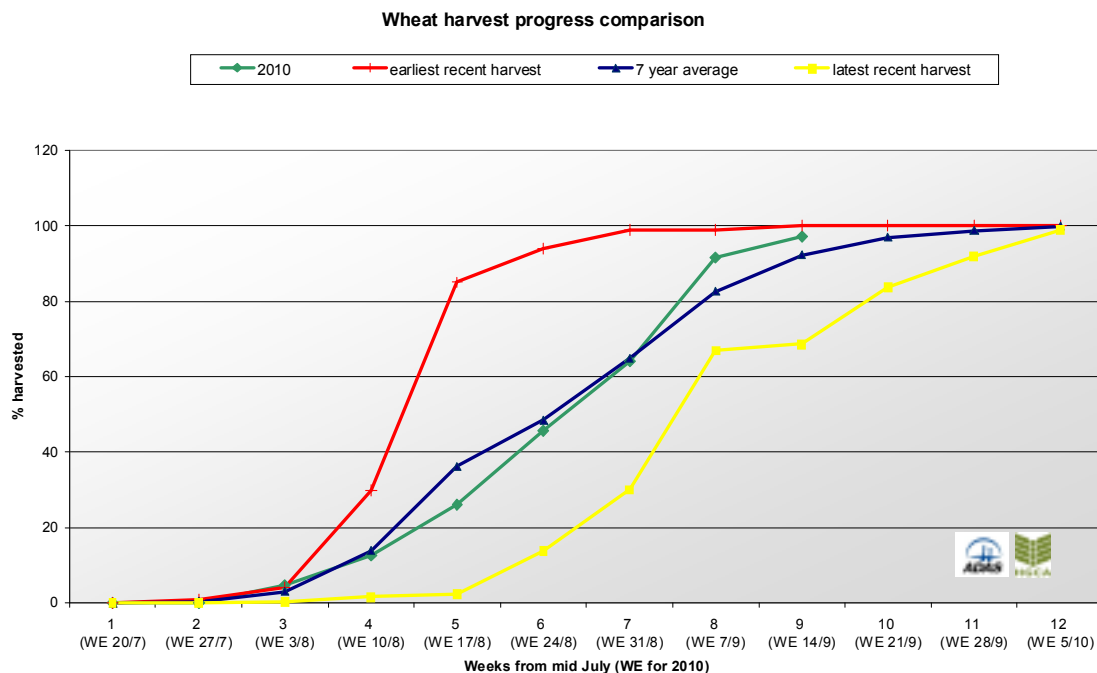
Winter wheat

Harvest progress: 95% UK area ($\approx 1,870,000$ ha)

Estimated average national yield: 7.5-7.7 t/ha

Winter wheat harvest is drawing to a close with the majority of crops in England and Wales now harvested and 95% of the UK area combined (Figure 4). The rate of harvest is typical for the time of year with harvest progress ahead of the 7 year average. Over 80% of the remaining wheat is in Scotland.

Winter wheat yields continue to be more variable than normal. Yields are average or above in Scotland, the North West and North East, however these are unlikely to substantially change the estimated UK average yield estimate of 7.5-7.6 t/ha, about 5% down on the UK 5 year average of 7.9 t/ha. On an individual field basis yields have ranged from 10-12.5 t/ha in crops grown on heavier land and light land crops yielding down in the region of 5-7 t/ha.



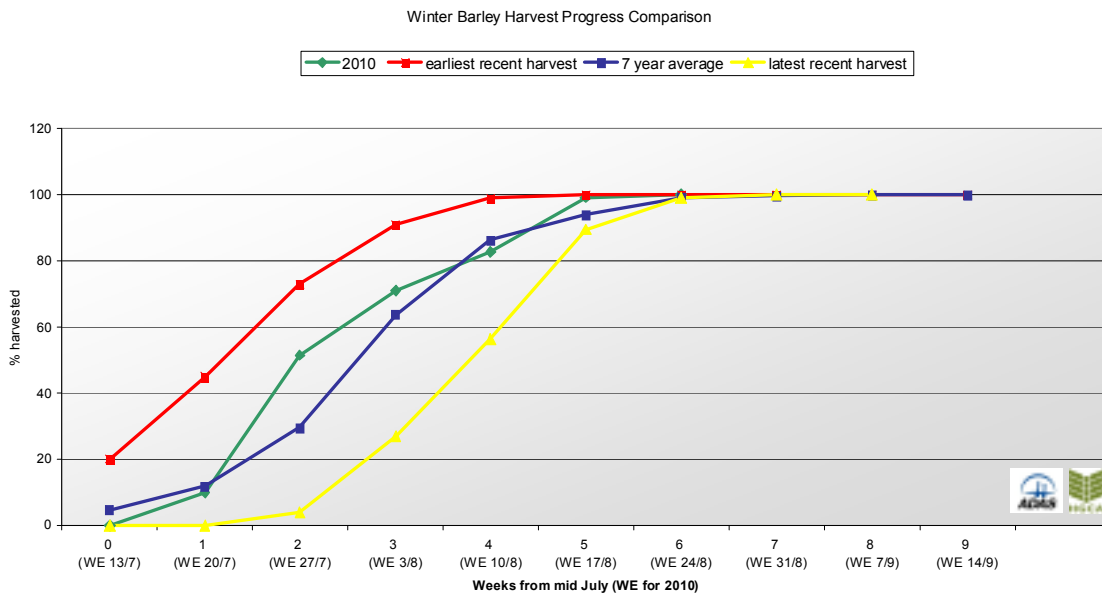
Source: ADAS 2010

Figure 4 Winter wheat harvest progress comparison (week 1 = WE 20th July)

Winter barley

Harvest progress: Harvest complete

Estimated national average yield: 6.2-6.4t/ha 5% down on UK 5 year average



Source: ADAS 2010

Figure 5 Winter barley harvest progress comparison (week 1 = WE 14th July)

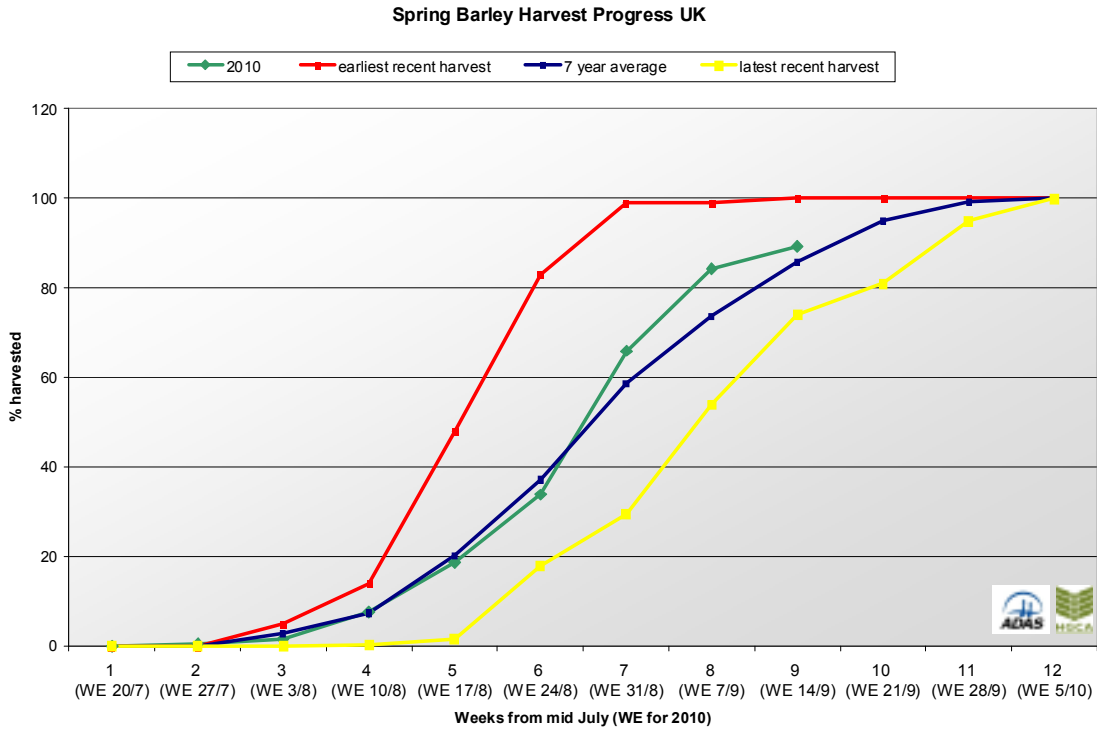
Spring barley

Harvest progress: 90% UK area (\approx 450,000 ha), 100% English & Welsh area, 80% Scottish area.

Estimated national average yield: 5.0-5.2 t/ha

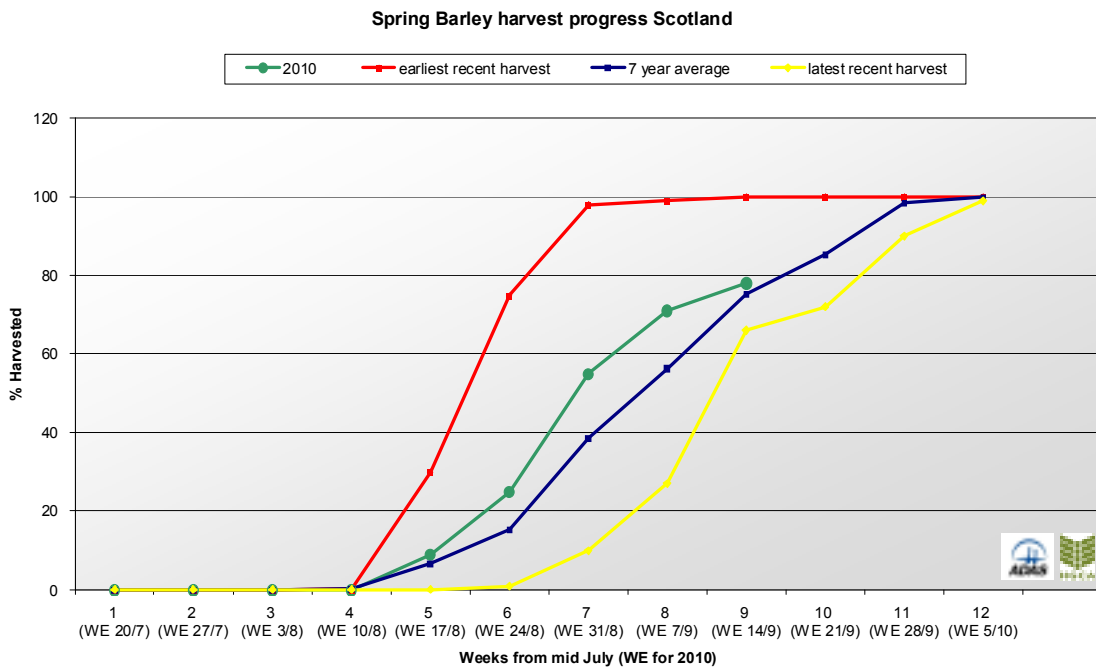
Spring barley harvest is virtually complete in the English regions and Wales, bringing the overall area harvested to almost 90% of the UK area (Figure 6) close to or slightly ahead of the 7 year average. In Scotland spring barley harvest progress has slowed slightly, bringing it close to the 7 year average at 80% complete (Figure 7).

Average UK spring barley yield is below the 5 year average at an estimated 5.0-5.2 t/ha, although individual field yields range from 4.5-8.0 t/ha.



Source: ADAS 2010

Figure 6 Spring barley harvest progress comparison UK (week 1 = WE 20th July)



Source: ADAS 2010

Figure 7 Spring barley harvest progress comparison Scotland (week 1 = WE 20th July)

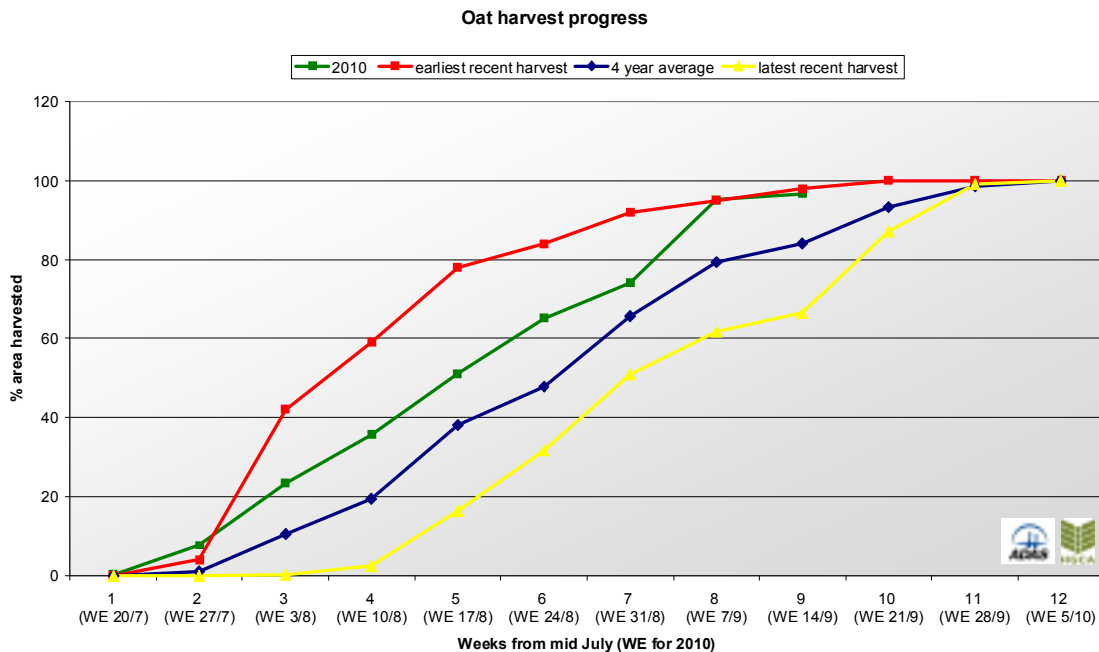
Oats

Harvest progress: 99% UK area)

Estimated national average yield: 5.5-5.6t/ha

Winter oat harvest is complete, and there is good progress on spring oats, but some still remain in Scotland and the North East (Figure 8). Oat harvest completion at the same rate as the earliest recent harvest, well ahead of the 4 year average.

The estimated average UK yield for oats (winter and spring) is around 5.6 t/ha, 5% below the 5 year average of 5.8 t/ha. Individual farm yields were variable dependent upon soil type and whether crops were winter or spring varieties. There have also been regional differences with some northern growers reporting record yields.



Source: ADAS 2010

Figure 8 Oats harvest progress comparison (week 1 = WE 20^h July)

Winter oilseed rape

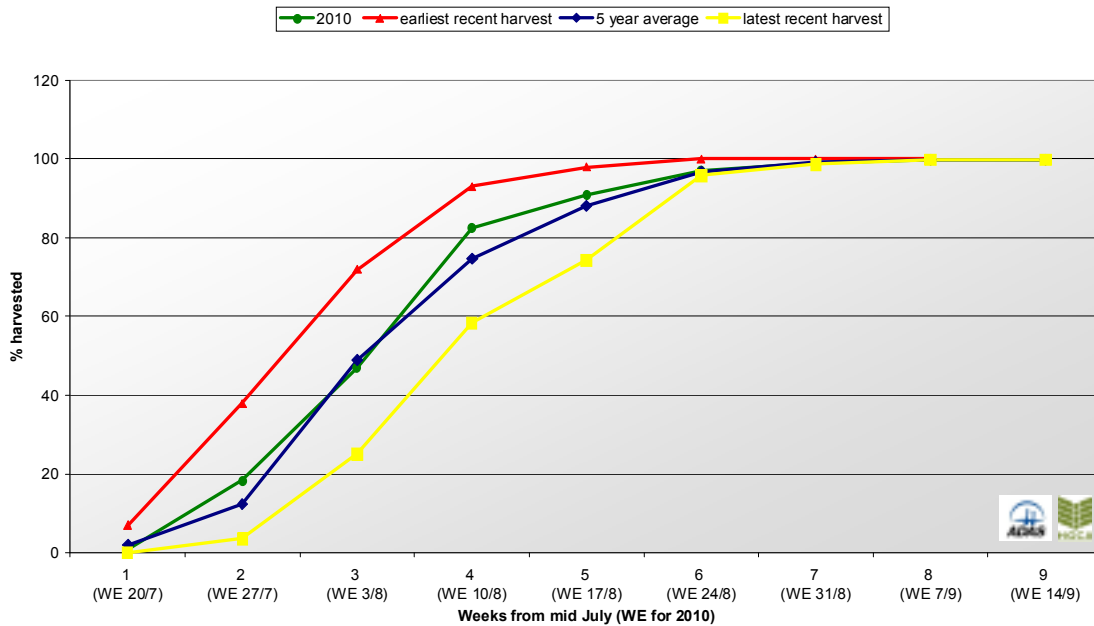
Harvest progress: 100% UK area – harvest complete

Estimated national average yield; 3.7t/ha

Harvest of winter oilseed rape is now complete. Harvest progress on oilseed rape has remained close to average through out the harvest period (figure 9).



Winter oilseed rape harvest progress comparison



Source: ADAS 2010

Figure 9 Winter oilseed rape harvest progress comparison (week 1 – WE 20th July)

Spring oilseed rape

Harvest progress: 75% UK area

Average regional yield range: 1.8-2.0 t/ha

In the southern and central regions of the UK harvest of spring oilseed rape is now almost complete. In the Northern regions and Scotland crops are only just starting to be ready to harvest, with few cut at present. Over all about 75% of the spring oilseed rape area has now been harvested.

Susan Twining	Sarah Wynn	Jack Watts
ADAS Boxworth Business line 01488 681321 Mobile 07831 266749	ADAS Boxworth Direct line 01954 268249	HGCA - AHDB Office 0247 647 8760 Mobile 07809 522560
susan.twining@adas.co.uk	sarah.wynn@adas.co.uk	jack.watts@HGCA.com